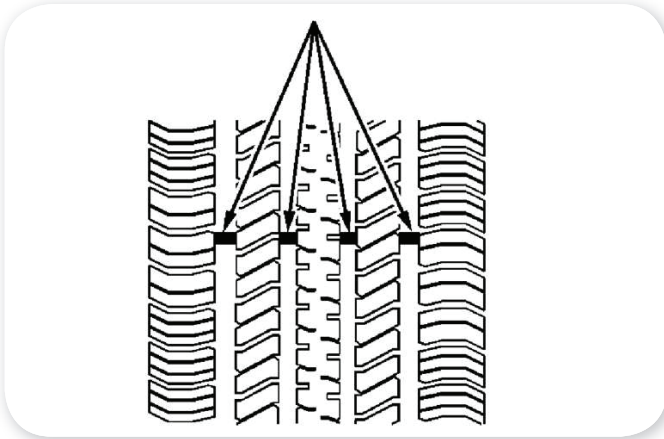




When Is It Time for New Tires?



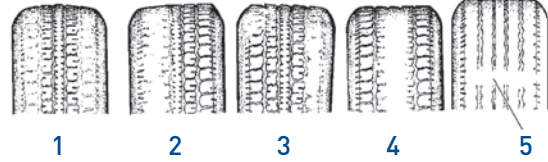
1/16 = .0625
3/32 = .09375
4/32 = .125

Common FMC Recommendation
Selective FMC Recommendation

One way to tell when it is time for new tires is to check the tread wear indicators, which will appear when your tires have only 1/16 inch (1.6 mm) or less of tread remaining.

You Need a New Tire If Any of the Following Statements Are True:

- You can see the indicators at three or more places around the tire
- You can see cord or fabric showing through the tire's rubber
- The tread or sidewall is cracked, cut, or snagged deep enough to show cord or fabric
- The tire has a bump, bulge, or split, excluding normal sidewall seam
- The tire has a puncture, cut, or other damage that cannot be repaired well because of the size or location of the damage
- Tire has visible wear



- 1 Underinflation, Hard Cornering, Lack of Regular Rotation
- 2 Incorrect Wheel Alignment, Hard Cornering, Lack of Regular Rotation
- 3 Incorrect Wheel Alignment
- 4 Overinflation, Heavy Acceleration, Lack of Regular Rotation
- 5 Normal Wear to the Wear Indicator

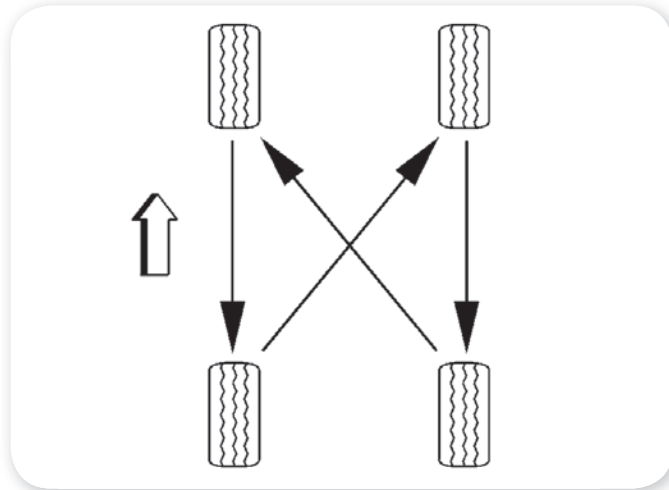
TIRE ROTATION AND INSPECTION

Rotate the tires and wheels at frequent intervals to equalize wear. Refer to tire rotation in "Maintenance and Lubrication." In addition to scheduled rotation, rotate the tires and wheels whenever uneven tire wear is noticed.

Radial tires tend to wear faster in the shoulder area, particularly in front positions. Radial tires in non-drive locations may develop an irregular wear pattern that may increase tire noise. This makes regular rotation especially necessary.

Refer to "Tire and Wheel Removal and Installation" for tire removal.

Always use a four-wheel rotation. After rotation, check the wheel nuts for specified torque, then set the tire pressure.



Job #	GMC1-12-03142	— 266	Version #	1	Document Name	GMC1-12-03142-266 New Tires.indd	Last Modified	3-23-2012 10:54 AM									
Job Description	New Tires-Additional Tool Tips March 2012		Art Director	anelsen	Linked Graphics	30x30 diagonal_line_pattern.ai GM_FCO_Primary_Divisional.ai Tech Tip New Tires.pdf	Colors In-Use	Cyan Magenta Yellow Black PMS 288 C									
Bleed	8.75" x 11.25"	Mech Scale	100	Copy Writer	TBD	User	ma-atedora2	Printer	mykanos	Output Date	3-23-2012 10:54 AM						
Trim	8.5" x 11"	Print Scale	100%	Proj Mgr	csenn	Mechd By:	nminieri	RTVd By:	TBD								
Live	None	Stock	None	Acct Svc	kdenmark	<table border="1"> <tr> <td>CU/CD</td> <td>COPWRITER</td> <td>AD</td> </tr> <tr> <td>ACCT SERVICE</td> <td>PROD</td> <td>COPY EDIT</td> </tr> </table>						CU/CD	COPWRITER	AD	ACCT SERVICE	PROD	COPY EDIT
CU/CD	COPWRITER	AD															
ACCT SERVICE	PROD	COPY EDIT															
Folded Size	None	Prod Mgr	afinnan	Art Buyer	TBD	<small>BY SIGNING YOUR INITIALS ABOVE, YOU ARE STATING THAT YOU HAVE READ AND APPROVED THIS WORK.</small>											
Finishing	None	Copy Edit	TBD	Mac	nminieri												
Colors Spec'd	4C																
Special Instr.	None																
Publications	None																